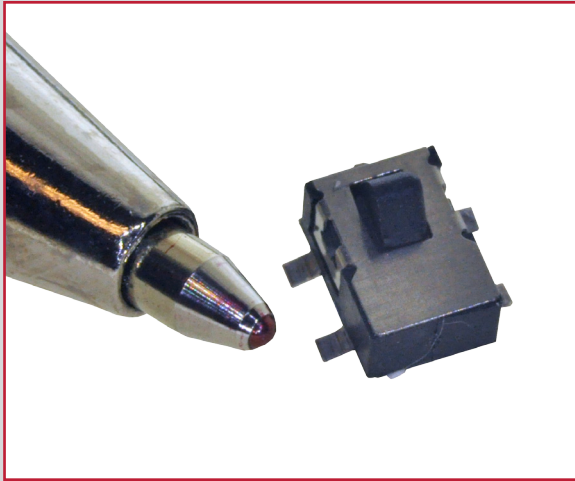
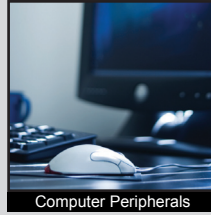


TD1146 SERIES DETECTOR SWITCH

ANTI-VANDAL SWITCHES
DETECTOR SWITCHES
DIP SWITCHES
KEYLOCK SWITCHES
NAVIGATION SWITCHES
PUSHBUTTON SWITCHES
ROCKER SWITCHES
ROTARY SWITCHES
SLIDE SWITCHES
SNAP ACTION SWITCHES
TACTILE SWITCHES
TOGGLE SWITCHES
CAP OPTIONS



APPLICATIONS / MARKETS



Computer Peripherals



Consumer Electronics



Testing Equipment



Handheld Devices



Gaming and Computer



Medical Equipment

RoHS

SPECIFICATIONS

Contact Rating: 1mA @5VDC
Travel: 3.0mm nominal
Electrical Life: 30,000 Cycles
Contact Resistance: 100mΩ Max. Initial
Insulation Resistance: 100M Ω @ 100VDC
Dielectric Strength: 100VAC
Operating Temperature: -25°C to 70°C
Storage Temperature: -25°C to 70°C
Operating Force: <50 gf
Contact Arrangement: SPST, N.O.

FEATURES & BENEFITS

- Ultraminiature 4.8mm x 3.5mm
- Surface mount

PART NUMBER CONFIGURATOR

Series

TD 1146

Specifications subject to change without notice



E-SWITCH®

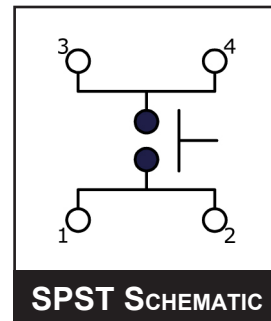
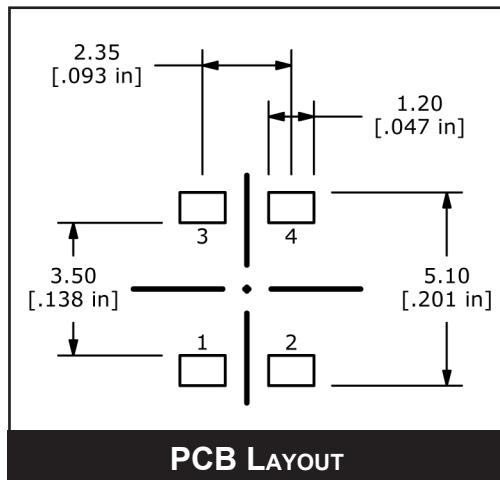
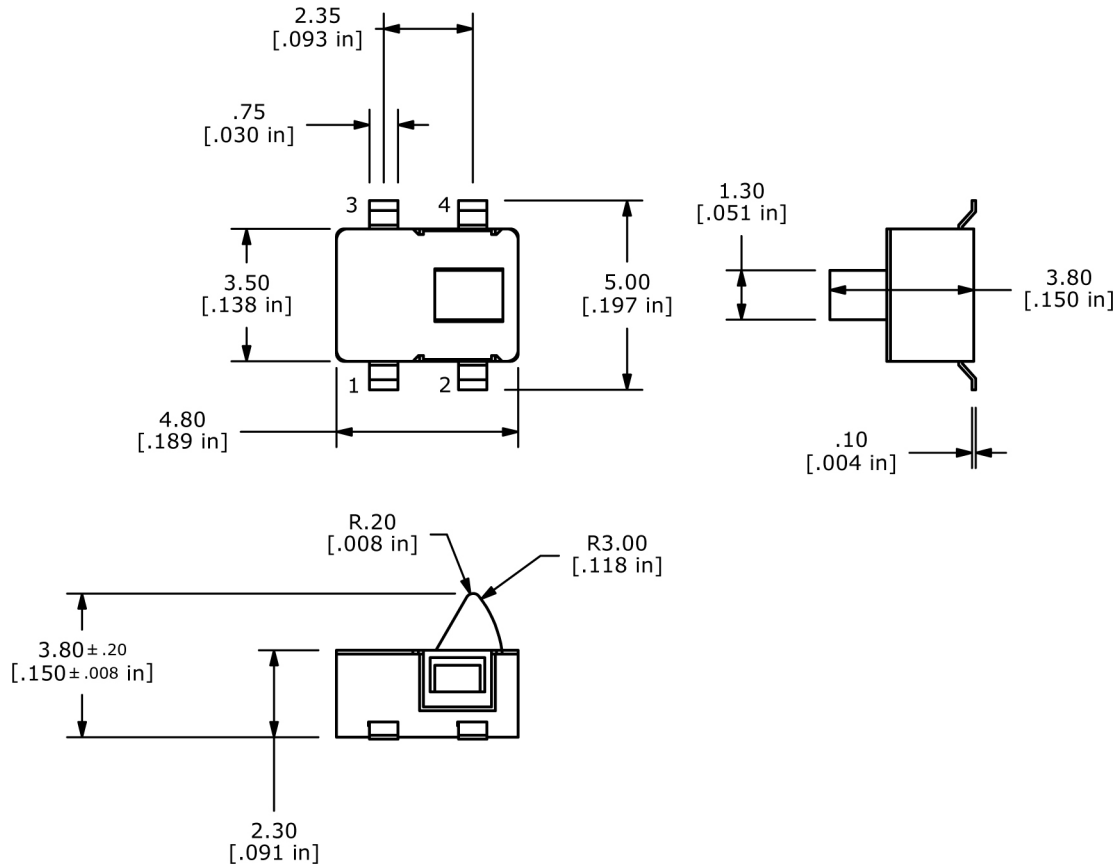
www.e-switch.com

800.867.2717

2

TD1146 SERIES DETECTOR SWITCH

BODY DIMENSIONS



- ANTI-VANDAL SWITCHES
- DETECTOR SWITCHES
- DIP SWITCHES
- KEYLOCK SWITCHES
- NAVIGATION SWITCHES
- PUSHBUTTON SWITCHES
- ROCKER SWITCHES
- ROTARY SWITCHES
- SLIDE SWITCHES
- SNAP ACTION SWITCHES
- TACTILE SWITCHES
- TOGGLE SWITCHES
- CAP OPTIONS

